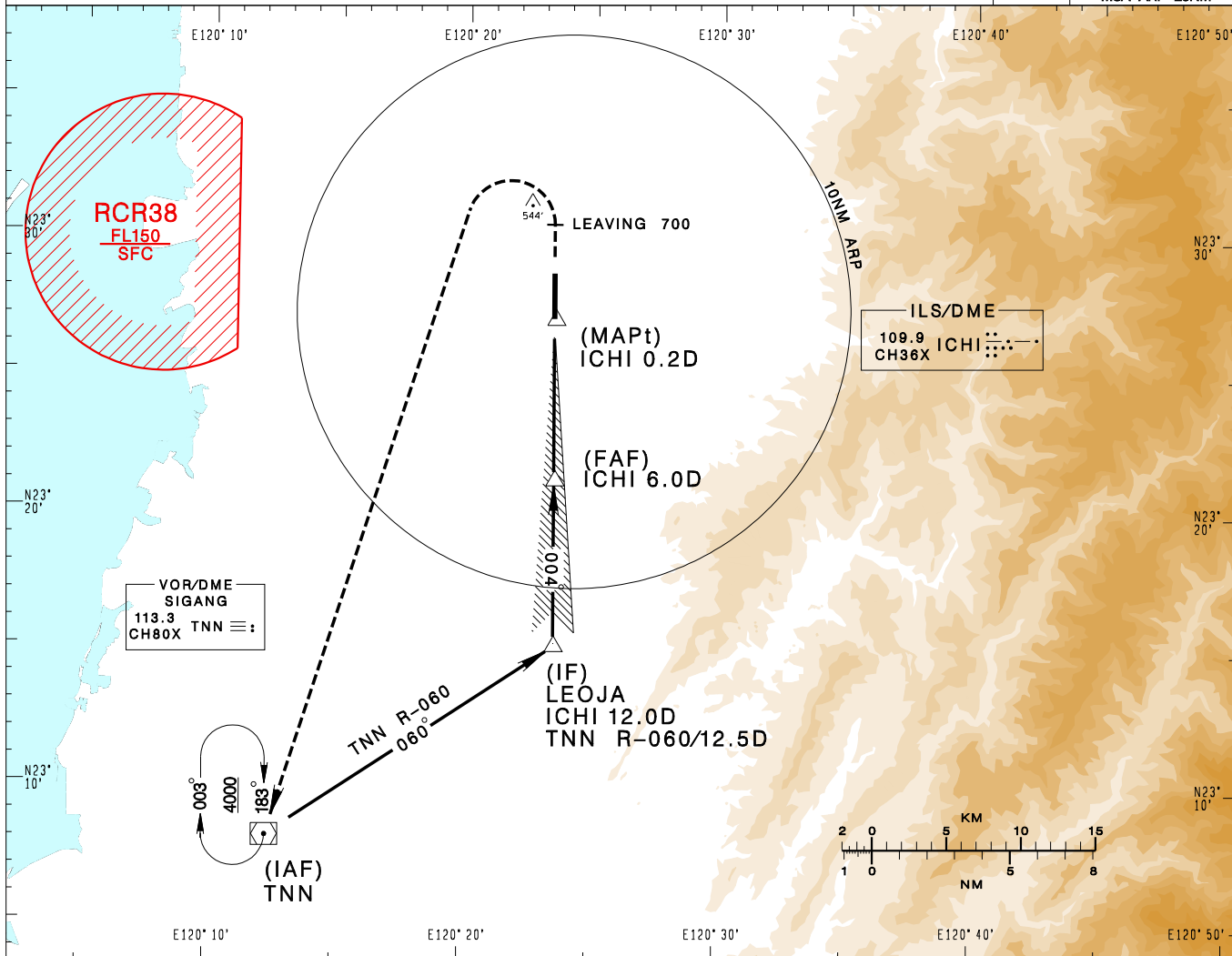


嘉義機場
CHIAYI AD

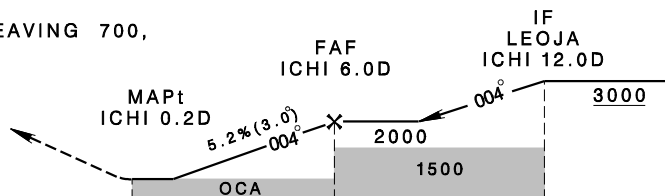
RCKU
LOC RWY36

KAOHSIUNG APP 120.6 301.0		CHIAYI TWR 118.6 236.6 275.8		VAR 4°W-2023 ↑	13600' MSA ARP 25NM
Apt Elev: 85'	Rwy36 THR Elev: 85'	Trans Level: FL130	Trans Alt: 11,000'		
BEARINGS ARE MAGNETIC; DISTANCES ARE NAUTICAL MILES; ELEVATIONS, HEIGHTS IN FEET					



DIST to ICHI	2DME	3DME	4DME	5DME	6DME
ADVISORY ALT	720	1040	1360	1680	2000

MISSED APCH:
CLIMB ON RWY HDG UNTIL LEAVING 700,
TURN LEFT DIRECT TO TNN.
CLIMB TO 4000 AND HOLD.



NM FROM ICHI 5 0 5 10 15

MINIMA (OCA IN FT, VIS IN M, OCH IN FT)

CATEGORY	A		B		C		D		
	STRAIGHT IN	560	1200 RVR1200	475	560	1600	475	560	1600
STRAIGHT IN (ALS OUT)	560/1600 475			560/2200 475					
CIRCLING	670/1900	585	720/2800	635	820/3700	735	940/4600	855	

NOTE
1. CIRCLING NOT AUTHORIZED EAST OF RWY.

*DME REQUIRED.

CHANGES: NEW CHART